

Genetics Catalogue

2023 Beef

Growth Rate

Days in Milk

Calving Ease



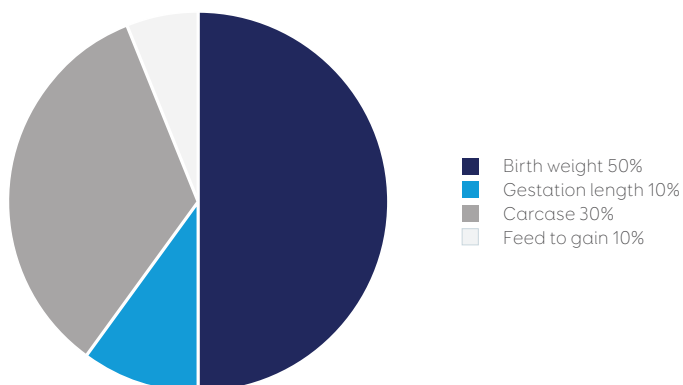
There's always room for improvement



Beef Selection Index (BSI®)

Selection indices simplify sire selection by combining key traits into one value - higher values indicating more suitable sires. LIC's BSI® emphasises traits that are relevant to the entire dairy-beef supply chain. The power in this index is that it can be compared across a number of beef breeds - Angus, Simmental, Charolais, and the composite Profit Maker®.

Trait	Weightings	
Birth weight	50%	50%
Gestation length	10%	10%
Yearling weight	5%	30%
Eye muscle area	5%	
Intramuscular fat	10%	
Carcase weight	10%	
Feed to gain	10%	10%
	100%	



Quick-select list for polled LIC beef products (for DNA-tested bulls only)								
Breed	Product Type	Pack/Bull	Polled Status		Always marks calves	Price _{+gst}	Page	
			PP	Pp				
Angus	Pack	No-choice SGL pack	✓			\$14.55	14	
		No-choice beef pack	✓			\$11.85		
	Individual	722250 Rissington Gold Rush	✓			\$19.20		
		721261 Rissington Paradox	✓			\$19.20		
Belgian Blue	Pack	No-choice polled pack	✓			\$14.55	11	
	Individual	721402 Woodleigh Crown	✓			\$16.20		
Charolais	Pack	No-choice beef pack	✓		✓	\$11.85	12	
		716012 Kakahu Gerry	✓		✓	\$16.20		
	Individual	721362 Paringa Foremost	✓		✓	\$16.20		
		722400 Kakahu Milestone	✓		✓	\$16.20		
Hereford	Pack	No-choice SGL pack - frozen	✓	✓	✓	\$14.55	8	
		No-choice SGL pack - fresh	✓	✓	✓	\$19.80		
		No-choice beef pack	✓	✓	✓	\$11.85		
	Individual	819111 Shrimpton's Hill 170045			✓	✓	\$19.20	9
		819112 Shrimpton's Hill 170046			✓	✓	\$19.20	
		819116 Shrimpton's Hill 180034	✓			✓	\$19.20	
		820128 Shrimpton's Hill 190126	✓			✓	\$19.20	
		720002 NZHA Cooper	✓			✓	\$20.00	
722003 NZHA Riverton Tuck	✓			✓	\$20.00			
Murray Grey	Pack	No-choice beef pack	✓		✓	\$11.85	23	
	Pack	No-choice beef pack	✓			\$11.85	18	
Profit Maker®	Individual	721266 Rissington Expedite	✓			\$18.20	19	
		722320 Rissington Reliant	✓			\$18.20		
	Pack	720167 Rissington Savannah	✓			\$18.20	20	
Simmental	Pack	No-choice beef pack	✓	✓		\$11.85	21	
	Individual	722340 Kerrah Humdinger	✓			\$16.20		
		721344 Rissington Regent	✓			\$16.20		
Speckle Park	Pack	No-choice white beef pack	✓			\$19.45	16	
	Individual	721405 Maungahina Quantity	✓			\$21.20		
		722084 Maungahina Rebel	✓			\$21.20		
		719022 Maungahina Northern Star	✓			\$21.20		
Stabilizer®	Pack	720060 Premier Platinum	✓			\$21.20	7	
		No-choice beef pack	✓			\$11.85		
	Individual	723056 Focus Clifford	✓			\$18.20		
		720073 Focus Optimizer	✓			\$18.20		

LIC's selection of elite beef sires

Factors outside the farm gate are dictating that every dairy-origin calf born will have a path to market. These factors include the need to create more value from non-replacement calves, a higher use of sexed semen and the drive towards more climate-friendly livestock.

By providing you with elite beef sires, our aim is to help you create dairy beef calves that are born easily, grow well and are in demand in the marketplace.

How do we select these elite beef sires?

We select our beef sires from a range of beef breeds to give you management and market options. Whether it be colour marking, calving ease, growth rate, polled, or numerous other criteria, we have worked hard to find elite bulls that will meet your selection criteria and produce profitable offspring.

LIC's genetic selection team select bulls based on their genetic merit for traits such as calving ease, cow days in milk, growth rates, carcass and meat quality.

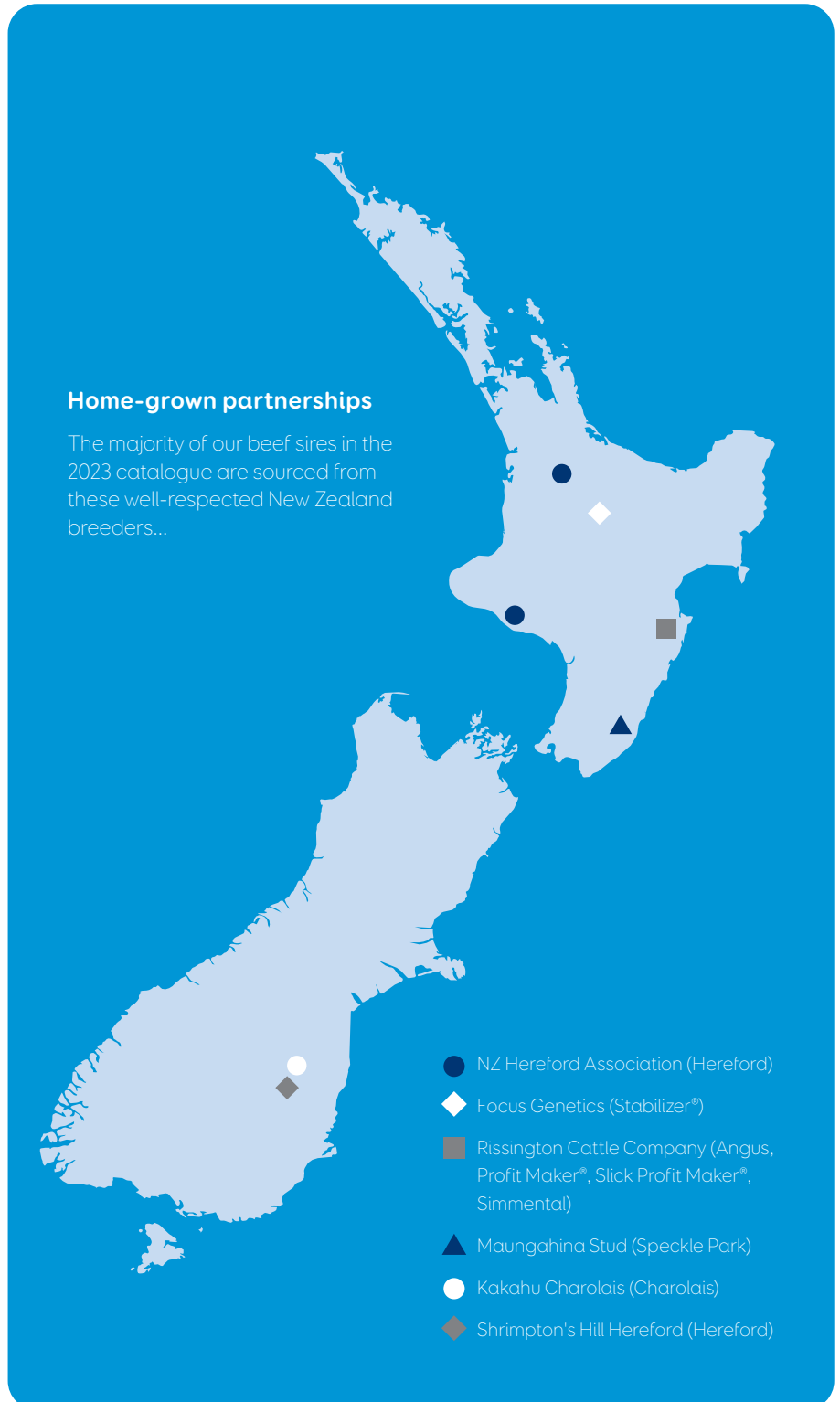
The end result of this selection process is a team of bulls that are among the best available anywhere in the world in meeting these goals.

To make these selections, we use many data sources. These include BREEDPLAN Estimated Breeding Values (EBVs), Leachman multi-breed data, and the Beef + Lamb NZ Dairy Beef Progeny test. We also seek out the advice of our network of bull breeders to recommend potential sires to us. Many of these breeders have been in business for decades and their guidance and intimate breed knowledge is both valued and trusted.

To make sure the selections we have made continue to be fit for purpose, we continue to monitor sire performance. Calving's recorded in MINDA® give us an even more accurate picture of the sires calving ease and gestation length over dairy cows.

Home-grown partnerships

The majority of our beef sires in the 2023 catalogue are sourced from these well-respected New Zealand breeders...





To find out more about BeefPrint and how it's calculated, scan the QR code.



Improve your dairy beef footprint with BeefPrint®

Approximately 70% of New Zealand export beef is dairy in origin. Selecting beef bulls for the industry's future beef supply is about efficiency and sustainability now more than ever.

LIC's BeefPrint® index assigns beef bulls a score based on their estimated methane and nitrogen efficiency. The higher the score, the greater the efficiency for your farms, the environment, and the industry.

Showcase that you have chosen BeefPrint-evaluated sires for your beef calves with LIC's BeefPrint calf packs on page 24.



How to Read an Individual Beef Sire Page

Tag icons indicate that progeny of this sire or product is eligible for the corresponding calf tags on page 24.

Average Gestation Lengths of the sire's dairy beef progeny will be displayed for bulls that have reliable NZAEL gestation length BVs based on recorded calvings, or average gestation lengths from the B+LNZ Genetics Dairy Beef Progeny Test.

Polled The polled gene is dominant and carriers are born without horns. Homozygous polled ("100% polled") bulls will always produce polled offspring, whereas 50% of offspring from heterozygous polled ("50% polled") bulls will have horns.

Calving Ease (%) EBVs are based on calving difficulty scores, birth weights and gestation lengths of pure beef progeny. More positive EBVs are favourable.

Gestation Length (days) EBVs estimate the length of pregnancy for a sire's progeny. More negative EBVs indicate shorter gestation lengths.

400 Day Weight (kg) EBVs are based on a sire's purebred progeny weights at this age. More positive EBVs indicate heavier progeny (faster growth).

Intramuscular Fat (%) EBV (also known as marbling) estimates the genetic difference in the % of intramuscular fat at the 12/13th rib site in a standard carcass. More positive EBVs are usually favoured.

BSI® See page 2 of the beef section.

% Rank indicates how good or bad a sire is for a trait. Lower values indicate superior bulls. For example a % rank of 5 indicates that they are in the top 5% for that trait, and better than the other 95% of sires.

721261 Rissington Paradox

Breeder: Rissington Cattle Company
Individually
\$19.20^{+gst}

Proven Progeny Averages

Gestation Length	Birth Weight
Due Nov 2023	Due Nov 2023

100% Polled

Non Carrier

Not a Dilution Carrier

Within-breed Evaluation

Dairy Significance	EBV	99 th	75 th	50 th	25 th	1 st	%rank
Calving Ease	6.1	Hard				Easy	25
Gestation Length	-8.9	Long				Short	5
Birth Weight	2.3	Heavy				Light	20
Beef Significance	EBV	99 th	75 th	50 th	25 th	1 st	%rank
400 Day Weight	113	Light				Heavy	5
Carcass Weight	77	Light				Heavy	20
Eye Muscle Area	7.5	Less				More	35
Intramuscular Fat	3.6	Less				More	20

BEEFPRINT®

- Methane Efficiency
- Nitrogen Efficiency

BSI®

1011

\$Dairy®

\$2339

Birth Weight For bulls that have been used in the B+LNZ Genetics Dairy Beef Progeny Test, the average birth weights from their dairy beef progeny will be shown.

Red Carrier Red coat colour is recessive to black, so bulls can carry red coat colour without expressing it. If red carriers are mated together then red calves are possible.

Dilution Carrier Some breeds can carry the dilution gene which is dominant. It dilutes black base coats to grey/silver and red coats to gold/yellow.

Birth Weight (kg) EBVs are based on the recorded birth weights of a sire's purebred progeny. Lower EBVs indicate lighter calves.

Carcass Weight (kg) EBVs are based on a sire's purebred progeny weights at the time of slaughter. More positive EBVs indicate heavier carcasses.

Eye Muscle Area (sq cm) EBVs estimate muscling. More positive EBVs indicate progeny are likely to be more muscled and have more higher-value cuts of meat.

BeefPrint® See page 4 of the beef

\$Dairy® Index units describe the differences in profit per dairy beef calf. It includes traits that affect profitability of the NZ dairy farmer through to finisher and beef processor. If Bull A is \$2300 & Bull B is \$2100, Bull A is expected to generate \$100 more profit per finished animal at 20 months.

Genetic Evaluation This will either be a within-breed or multi-breed evaluation. Within-breed evaluation EBVs and rankings can only be compared for bulls of the same breed. Multi-breed EBVs for Simmental, Charolais, Angus, and Profit Maker® can be directly compared on page 25. Stabilizer® uses a distinct multi-breed platform so its EBVs cannot be compared to other bulls within this catalogue.

Dairy Beef Progeny Test (DBPT)



Dairy Beef Progeny Test (DBPT)

Beef+Lamb New Zealand (B+LNZ) Genetics and LIC are working together to fulfil growing demand for quality beef genetics suitable for New Zealand dairy cows and support a continued focus on animal welfare.

The B+LNZ Genetics Dairy Beef Progeny Test aims to improve the quality of dairy beef animals in the industry by identifying and enabling wider use of elite bulls for producing dairy beef. Beef breeders can nominate their best bulls to be tested and access a potential path to the dairy market for the first time by working with LIC.

The progeny test aims to identify and prove bulls that work for both dairy and beef farmers. The bulls are easier-calving, short gestation length, have excellent growth rates, and high intramuscular fat (marbling). Over 20 beef bulls are selected each year and AB mated to >1,500 crossbred dairy cows, with the resulting calves grown out for analysis. 166 bulls have been evaluated over the past seven years.

Below are some of the elite beef bulls that have been proven as suitable for use over dairy cows through the progeny test scheme.

722400 Kakahu Milestone

Breeder: Kakahu Stud

Breed: Charolais

DBPT BWT	DBPT GL
Due 2024	Due 2024

Commentary: Milestone entered the progeny test in 2022 with his first calves to be born in spring 2023. His Breedplan EBVs put him in the top 1% of the New Zealand Charolais breed for calving ease, 400 and 600 day weight and marbling, and in the top 5% for gestation length, birth weight and carcass weight. He is bred from one of New Zealand's most well-respected studs who have developed well-proven sires such as Kakahu Gerry.

Individually

\$16.20_{+gst}

See page 13 for EBVs



721186 Torrisdale Quercus Q40

Breeder: Torrisdale Murray Grey Stud

Breed: Murray Grey

DBPT BWT	DBPT GL
36.9 kg	278.9 days

Commentary: Quercus ranked in the top 16% of all beef sires in the DBPT for gestation length and top 32% for birth weight of his progeny. From New Zealand's largest performance-recorded Murray Grey herd, he has been used extensively within the Torrisdale Stud. His Breedplan EBVs are in the top 10% of the NZ Murray Grey breed for gestation length and calving ease and for yearling weight. He ranks in the top 1% for both eye muscle area and marbling. Only available through the Murray Grey no-choice beef pack.

Pack Price

\$11.85_{+gst}



819111 Shrimpton's Hill 170045

Breeder: Shrimpton's Hill Herefords

Breed: Hereford

DBPT BWT	DBPT GL
35.2 kg	275.5 days

Commentary: From the world's leading short gestation length Hereford stud. At an average of 275.5 days, this bull has the shortest gestation of any sire tested in the Dairy Beef Progeny Test. He was also in the top 11% for birth weight. His proven progeny averages shows he has a -12 days gestation length BV, meaning that his calves will be born, on average, six days earlier than the dairy herd average. He combines the benefits of more days in milk and marketable white-faced beef calves.

Individually

\$19.20_{+gst}

See page 9 for EBVs





Stabilizer®

- Low Birth Weight for beef cattle (approximately 33kg in Focus Genetics' Stabilizer® calves)
- Stabilizer® calves wean earlier at heavier weights relative to purebred Angus
- No-choice pack bulls are homozygous polled and red

Stabilizer® are a multi-breed composite combining the calving ease, marbling, and moderate size of the Angus and South Devon with the muscle and growth of the European Gelbvieh and Simmental.

Product options:

- No-choice Stabilizer® beef pack - \$11.85 + GST
- Your choice of Stabilizer® bull - \$18.20 + GST

723056 Focus Clifford

Breeder: Focus Genetics

Commentary:

An outstanding young bull, Clifford has already proven himself as a low birth weight sire within the Focus Genetics herd. His calving ease, gestation length and birth weight EBVs all rank him in the top 5% of the multi-breed evaluation for those traits. He is in the top 5% of the multi-breed evaluation for two-year-old weight EBV and in the top 1% for eye muscle area EBV (an indication of muscling). This big red bull is homozygous polled and homozygous red. Clifford is well known for his quiet nature and is a pleasure to work with.

Individually **\$18.20**
+gst



Proven Progeny Averages

Gestation Length

Due Nov 2024



100% Polled



Red Carrier



Not a Dilution Carrier

Focus Genetics Multi-breed Evaluation

Dairy Significance	EBV	99 th	75 th	50 th	25 th	1 st	%rank
Calving Ease	11.9	Hard				Easy	5
Gestation Length	-5.3	Long				Short	5
Birth Weight	-1	Heavy				Light	5
Beef Significance	EBV	99 th	75 th	50 th	25 th	1 st	%rank
400 Day Weight	79	Light				Heavy	15
Carcase Weight	39	Light				Heavy	50
Eye Muscle Area	7.6	Less				More	1
Intramuscular Fat	1.3	Less				More	3

720073 Focus Optimizer

Breeder: Focus Genetics

Commentary:

A highly proven homozygous polled black bull whose calves have performed exceptionally well at weaning. As a trait leader in eye muscle area (muscling) his calves should attract premiums for carcass values.

Individually **\$18.20**
+gst



Proven Progeny Averages

Gestation Length

284.5 days



100% Polled



Red Carrier



Not a Dilution Carrier

Focus Genetics Multi-breed Evaluation

Dairy Significance	EBV	99 th	75 th	50 th	25 th	1 st	%rank
Calving Ease	14.7	Hard				Easy	5
Gestation Length	-5.8	Long				Short	10
Birth Weight	-1.4	Heavy				Light	5
Beef Significance	EBV	99 th	75 th	50 th	25 th	1 st	%rank
400 Day Weight	67	Light				Heavy	40
Carcase Weight	38	Light				Heavy	55
Eye Muscle Area	11.4	Less				More	1
Intramuscular Fat	0.9	Less				More	25

Hereford

NZ Herefords



- British in origin, Herefords mature earlier than most European beef breeds
- The Herefords' distinctive white face makes for easy calf identification
- Homozygous polled bulls and packs available in SGL and non-SGL offerings
- LIC has the shortest gestation Hereford bull used via AB in the NZ dairy industry to date. He also ranks first from 166 sires (across 17 breeds) tested over seven years in the Beef+Lamb Dairy Beef Progeny Test (top left page 9)
- LIC's SGL Hereford product is sourced exclusively from Australasia's leading short gestation Hereford stud - Shrimpton's Hill Herefords - who specialise in breeding Herefords for dairy use
- LIC's no-choice beef pack sires are selected in partnership with and supplied by NZ Herefords

Product options:

- No-choice Hereford beef pack - \$11.85 + GST
- No-choice SGL Hereford pack - \$14.55 + GST
- Your choice of SGL Hereford bull - \$19.20 + GST (page 9)
- Your choice of Hereford beef bull - \$20.00 + GST (page 10)



Four-day-old SGL Hereford calves from crossbred dams

Coat Colour Possibilities:



No-choice Hereford beef pack (homozygous polled)

\$11.85^(+GST)
frozen

Within-breed ranking (can only be compared to other Herefords)

Calving Ease	Gestation Length	Birth Weight	400 Day Weight	Carcase Weight	Eye Muscle Area	Intramuscular Fat
Top 15%	Top 80%	Top 10%	Top 40%	Top 20%	Top 50%	Top 35%

No-choice SGL Hereford pack (contains heterozygous and homozygous polled bulls)

\$19.80^(+GST)
fresh (incl tech)*

\$18.80^(+GST)
fresh (DIY)*

\$14.55^(+GST)
frozen

Within-breed ranking (can only be compared to other Herefords)

Calving Ease	Gestation Length	Birth Weight	400 Day Weight	Carcase Weight	Eye Muscle Area	Intramuscular Fat
Top 10%	Top 1%	Top 20%	Top 80%	Top 70%	Top 65%	Top 40%

* contributes to Premier Sires sliding scale

819111 Shrimpton's Hill 170045

Breeder: Shrimpton's Hill Herefords

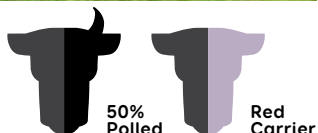
Individually

\$19.20_{+gst}



Proven Progeny Averages

Gestation Length	Birth Weight
275.5 days	35.2 Kg



Within-breed Evaluation

Dairy Significance	EBV	99 th	75 th	50 th	25 th	1 st	%rank
Calving Ease	10.8	Hard	[Progress bar]			Easy	5
Gestation Length	-12.9	Long	[Progress bar]			Short	1
Birth Weight	1.6	Heavy	[Progress bar]			Light	15
Beef Significance	EBV	99 th	75 th	50 th	25 th	1 st	%rank
400 Day Weight	60	Light	[Progress bar]			Heavy	40
Carcase Weight	57	Light	[Progress bar]			Heavy	35
Eye Muscle Area	4.1	Less	[Progress bar]			More	45
Intramuscular Fat	0.5	Less	[Progress bar]			More	55

819112 Shrimpton's Hill 170046

Breeder: Shrimpton's Hill Herefords

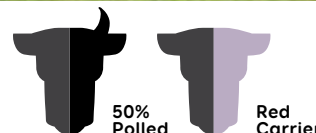
Individually

\$19.20_{+gst}



Proven Progeny Averages

Gestation Length	Birth Weight
278 days	



Within-breed Evaluation

Dairy Significance	EBV	99 th	75 th	50 th	25 th	1 st	%rank
Calving Ease	9.1	Hard	[Progress bar]			Easy	10
Gestation Length	-10.3	Long	[Progress bar]			Short	1
Birth Weight	2.6	Heavy	[Progress bar]			Light	30
Beef Significance	EBV	99 th	75 th	50 th	25 th	1 st	%rank
400 Day Weight	64	Light	[Progress bar]			Heavy	25
Carcase Weight	62	Light	[Progress bar]			Heavy	20
Eye Muscle Area	4.1	Less	[Progress bar]			More	45
Intramuscular Fat	0	Less	[Progress bar]			More	85

819116 Shrimpton's Hill 180034

Breeder: Shrimpton's Hill Herefords

Individually

\$19.20_{+gst}



Proven Progeny Averages

Gestation Length	Birth Weight
277.1 days	



Within-breed Evaluation

Dairy Significance	EBV	99 th	75 th	50 th	25 th	1 st	%rank
Calving Ease	11.3	Hard	[Progress bar]			Easy	5
Gestation Length	-10.5	Long	[Progress bar]			Short	1
Birth Weight	1.7	Heavy	[Progress bar]			Light	20
Beef Significance	EBV	99 th	75 th	50 th	25 th	1 st	%rank
400 Day Weight	42	Light	[Progress bar]			Heavy	90
Carcase Weight	41	Light	[Progress bar]			Heavy	85
Eye Muscle Area	2.4	Less	[Progress bar]			More	90
Intramuscular Fat	1.1	Less	[Progress bar]			More	20

820128 Shrimpton's Hill 190126

Breeder: Shrimpton's Hill Herefords

Individually

\$19.20_{+gst}



Proven Progeny Averages

Gestation Length	Birth Weight
281.6 days	36.6 kg



Within-breed Evaluation

Dairy Significance	EBV	99 th	75 th	50 th	25 th	1 st	%rank
Calving Ease	12.6	Hard	[Progress bar]			Easy	1
Gestation Length	-9.2	Long	[Progress bar]			Short	1
Birth Weight	3.1	Heavy	[Progress bar]			Light	35
Beef Significance	EBV	99 th	75 th	50 th	25 th	1 st	%rank
400 Day Weight	65	Light	[Progress bar]			Heavy	25
Carcase Weight	60	Light	[Progress bar]			Heavy	25
Eye Muscle Area	3.5	Less	[Progress bar]			More	60
Intramuscular Fat	0.8	Less	[Progress bar]			More	35

720002 NZHA Cooper*

Breeder: Colin & Sue Corney

Individually

\$20.00
+gst



Proven Progeny Averages

Gestation Length	Birth Weight
282.5 days	Due Jan 2024



Within-breed Evaluation

Dairy Significance	EBV		99 th	75 th	50 th	25 th	1 st	%rank
Calving Ease	11.6	Hard	[Progress bar]				Easy	5
Gestation Length	0.6	Long	[Progress bar]				Short	80
Birth Weight	-0.8	Heavy	[Progress bar]				Light	5
Beef Significance	EBV		99 th	75 th	50 th	25 th	1 st	%rank
400 Day Weight	53	Light	[Progress bar]				Heavy	65
Carcase Weight	59	Light	[Progress bar]				Heavy	30
Eye Muscle Area	3	Less	[Progress bar]				More	75
Intramuscular Fat	0.7	Less	[Progress bar]				More	40

*720002 NZHA Cooper's calves are eligible for registration with NZ Herefords

722003 NZHA Riverton Tuck*

Breeder: M & C Cranstone Ltd

Individually

\$20.00
+gst



Proven Progeny Averages

Gestation Length
Due Nov 2023



Within-breed Evaluation

Dairy Significance	EBV		99 th	75 th	50 th	25 th	1 st	%rank
Calving Ease	6.7	Hard	[Progress bar]				Easy	25
Gestation Length	0.2	Long	[Progress bar]				Short	70
Birth Weight	1.2	Heavy	[Progress bar]				Light	15
Beef Significance	EBV		99 th	75 th	50 th	25 th	1 st	%rank
400 Day Weight	63	Light	[Progress bar]				Heavy	80
Carcase Weight	62	Light	[Progress bar]				Heavy	20
Eye Muscle Area	5.1	Less	[Progress bar]				More	20
Intramuscular Fat	0.9	Less	[Progress bar]				More	30

*NZHA Riverton Tuck's calves are eligible for registration with NZ Herefords



Hereford x Dairy Bulls

Polled Belgian Blue

- LIC's polled Belgian Blue genetics are NZ-bred and sourced from North and South Island studs
- Belgian Blue can colour-mark calves
- Belgian Blue genetics can improve carcass conformation and muscling

LIC is excited to offer NZ-bred, polled Belgian Blue genetics from herds that keep records of their animals performance. These herds have the aim of producing animals that are easy to calve and grow rapidly to the yearling mark and beyond.

Belgian Blues have a distinctive 'double-muscled' phenotype which they are renowned for, characterised mostly by a convex shape of the rump. Purebred Belgian Blues yield extremely high quantities of saleable beef as a proportion of their carcass and pass on some of this improved yield and carcass conformation to their dairy cross progeny.

The double-muscling is caused by a naturally-occurring mutation in a gene responsible for muscle growth. This mutation causes, the muscles and subsequent cut size of purebred animals to be larger than other beef breeds, and also quite different in composition with reduced fat content (including intramuscular fat).

Product options:

- No-choice polled Belgian Blue pack - \$14.55 + GST
- Belgian Blue Woodleigh Crown - \$16.20 + GST

Coat Colour Possibilities:



721402 Woodleigh **Crown**

Breeder: Woodleigh Belgian Blues

Commentary:

Individually

\$16.20
+gst

Crown's 21-born calves from purebred heifers averaged 34.4kg at birth. Despite his low birth weight, his own growth performance ranked him 15th/100 yearlings. Crown's proven progeny average for gestation length is 280.9 days. He is only recommended for use over mature cows.



Charolais

- Charolais have seen the greatest increase in semen demand of any beef breed in LIC's catalogue over the past two years
- A great colour-marking option
- All LIC Charolais are homozygous polled
- Adds muscle and conformation to a dairy beef carcase
- A commonly-used terminal sire in commercial beef operations and well proven in dairy beef

Kakahu Milestone is from the same stud as standout sire Kakahu Gerry. Milestones' within-breed EBVs exceed those of Gerry for traits of dairy importance as well as growth and carcase. Kakahu Gerry was the number one sire for growth to weaning, 400, 600 days, as well as carcase weight in the first seven cohorts (166 beef bulls tested in the Beef+Lamb Genetics Dairy Beef Progeny Test). LIC also features Paringa Charolais sires sourced by long-time supplier to LIC, Rissington Cattle Company.

Product options:

- No-choice Charolais beef pack - \$11.85 + GST
- Your choice of Charolais bull - \$16.20 + GST



Charolais calves showing variance of possible coat colours



716012 Kakahu Gerry

Breeder: Kakahu Stud

Individually

\$16.20
+gst



Proven Progeny Averages

Gestation Length	282.8 days	Birth Weight	39.9 kg
-------------------------	------------	---------------------	---------

Within-breed Evaluation

Dairy Significance	EBV		99 th	75 th	50 th	25 th	1 st	%rank
Calving Ease	11.6	Hard	[Progress bar]				Easy	5
Gestation Length	-7.0	Long	[Progress bar]				Short	5
Birth Weight	-1.5	Heavy	[Progress bar]				Light	15
Beef Significance	EBV		99 th	75 th	50 th	25 th	1 st	%rank
400 Day Weight	51	Light	[Progress bar]				Heavy	1
Carcase Weight	31	Light	[Progress bar]				Heavy	10
Eye Muscle Area	1.6	Less	[Progress bar]				More	50
Intramuscular Fat	1.2	Less	[Progress bar]				More	5



100% Polled



Red Carrier



Dilution Carrier

No-choice Charolais beef pack (homozygous polled)



\$11.85 (+GST)

Within-breed pack average ranking (can only be compared to other Charolais)

Calving Ease	Gestation Length	Birth Weight	400 Day Weight	Carcase Weight	Eye Muscle Area	Intramuscular Fat
Top 5%	Top 10%	Top 5%	Top 15%	Top 20%	Top 45%	Top 20%



721362 Paringa Foremost

Breeder: Paringa Stud

Individually

\$16.20_{+gst}



Proven Progeny Averages

Gestation Length

Due Nov 2023



100% Polled



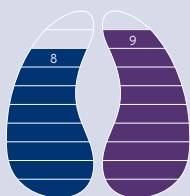
Red Carrier



Dilution Carrier

Within-breed Evaluation

Dairy Significance	EBV		99 th	75 th	50 th	25 th	1 st	%rank
Calving Ease	11.9	Hard	[Progressive bar chart]				Easy	5
Gestation Length	-3.9	Long	[Progressive bar chart]				Short	30
Birth Weight	-3.5	Heavy	[Progressive bar chart]				Light	5
Beef Significance	EBV		99 th	75 th	50 th	25 th	1 st	%rank
400 Day Weight	29	Light	[Progressive bar chart]				Heavy	35
Carcase Weight	25	Light	[Progressive bar chart]				Heavy	30
Eye Muscle Area	1.4	Less	[Progressive bar chart]				More	60
Intramuscular Fat	0.5	Less	[Progressive bar chart]				More	20



BEEFPRINT®

- Methane Efficiency
- Nitrogen Efficiency

BSI®

930

\$Dairy®

\$2,227



722400 Kakahu Milestone

Breeder: Kakahu Stud

Individually

\$16.20_{+gst}



Proven Progeny Averages

Gestation Length

Due Nov 2023

Birth Weight

Due Jan 2024



100% Polled



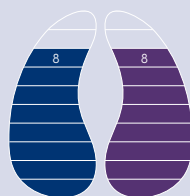
Red Carrier



Dilution Carrier

Within-breed Evaluation

Dairy Significance	EBV		99 th	75 th	50 th	25 th	1 st	%rank
Calving Ease	16.4	Hard	[Progressive bar chart]				Easy	1
Gestation Length	-7.8	Long	[Progressive bar chart]				Short	5
Birth Weight	-3.8	Heavy	[Progressive bar chart]				Light	5
Beef Significance	EBV		99 th	75 th	50 th	25 th	1 st	%rank
400 Day Weight	48	Light	[Progressive bar chart]				Heavy	1
Carcase Weight	34	Light	[Progressive bar chart]				Heavy	5
Eye Muscle Area	1.6	Less	[Progressive bar chart]				More	50
Intramuscular Fat	1.4	Less	[Progressive bar chart]				More	1



BEEFPRINT®

- Methane Efficiency
- Nitrogen Efficiency

BSI®

970

\$Dairy®

\$2,163



Two Charolais X dairy calves



March Data



February Data



Angus

- Homozygous polled – lack of horns in dairy-cross progeny can be helpful in identifying calves
- Low Birth Weight and short gestation for a beef breed
- LIC’s SGL Angus are supplied by Rissington Cattle Company in the Hawkes Bay who specialise in producing high-quality carcasses with a focus on eye muscle area (muscling) and intramuscular fat (marbling), as well as recording the feed efficiency of their beef bulls
- All LIC Angus sires will produce progeny which are eligible for the beef calf tags on page 24

Product options:

- No-choice Angus beef pack - \$11.85 + GST
- No-choice SGL Angus pack - \$14.55 + GST
- Your choice of SGL Angus bull - \$19.20 + GST (page 15)

No-choice Angus beef pack 						\$11.85 (+GST)
<small>(homozygous polled)</small>						
Within-breed pack average ranking (can only be compared to other Angus)						
Calving Ease	Gestation Length	Birth Weight	400 Day Weight	Carcase Weight	Eye Muscle Area	Intramuscular Fat
Top 15%	Top 45%	Top 10%	Top 65%	Top 55%	Top 20%	Top 30%

No-choice SGL Angus pack 						\$14.55 (+GST)
<small>(homozygous polled)</small>						
Within-breed pack average ranking (can only be compared to other Angus)						
Calving Ease	Gestation Length	Birth Weight	400 Day Weight	Carcase Weight	Eye Muscle Area	Intramuscular Fat
Top 10%	Top 5%	Top 5%	Top 90%	Top 75%	Top 20%	Top 25%



Rissington yearling Angus bulls grazing at LIC

Coat Colour Possibilities:



Note: it is common for Angus x Dairy calves to have some white on them, often around the navel.

722250 Rissington **Gold Rush**

Breeder: Rissington Cattle Company Individually \$19.20_{+gst}

Commentary: Rissington Gold Rush is a standout for gestation length, birthweight, and calving ease where he ranks in the top 1% of Angus cattle in the trans-Tasman Breedplan evaluation. In the across breed evaluation, he ranks in the top 2% for Feed to Gain which will see his progeny be very good converters of grass to red meat. With a \$Dairy Index value of \$2,409, he is the third-highest ranking bull on the multi-breed evaluation.

Below: Sydgen Bonus, sire of Gold Rush



721261 Rissington **Paradox**

Breeder: Rissington Cattle Company Individually \$19.20_{+gst}

Commentary: Bred by Rissington Cattle Company in Hawke's Bay, Paradox lives up to his name. He is a rare 'curve-bending' bull who not only delivers days in milk (top 5% for gestation length, Angus trans-Tasman Breedplan evaluation) and calving ease, but he also delivers progeny growth (top 5% for yearling weight, Leachman multi-breed evaluation). Combined with solid growth and carcass figures, it's no surprise he was among the highest ranking of all Rissington bulls on the \$Dairy Index. He has also been used as a sire in the Rissington Angus herd.



Proven Progeny Averages

Gestation Length	Birth Weight
Due Nov 2024	Due Nov 2024

100% Polled

Not a Red carrier

Proven Progeny Averages

Gestation Length	Birth Weight
Due Nov 2023	Due Nov 2023

100% Polled

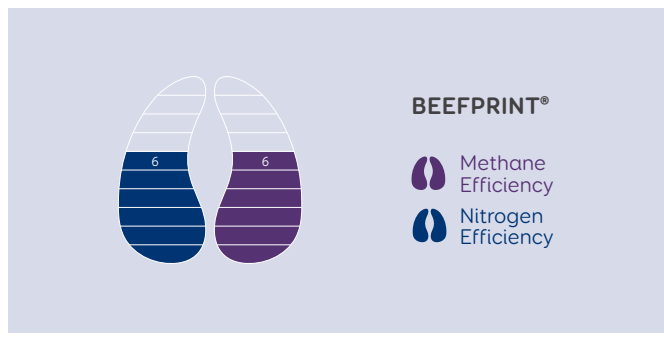
Not a Red carrier

Within-breed Evaluation

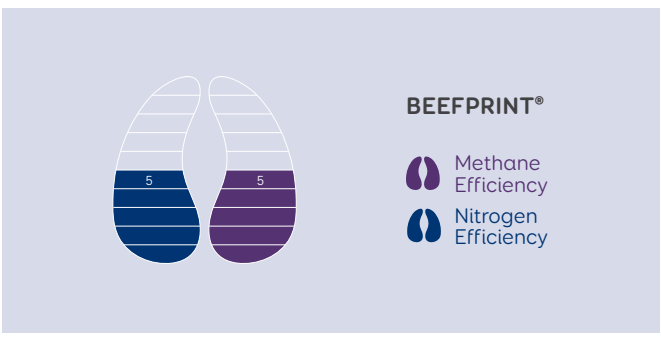
Dairy Significance	EBV	99 th	75 th	50 th	25 th	1 st	%rank
Calving Ease	12.9	Hard				Easy	1
Gestation Length	-10.3	Long				Short	2
Birth Weight	-2.3	Heavy				Light	1
Beef Significance	EBV	99 th	75 th	50 th	25 th	1 st	%rank
400 Day Weight	76	Light				Heavy	90
Carcass Weight	62	Light				Heavy	65
Eye Muscle Area	12.5	Less				More	4
Intramuscular Fat	2.2	Less				More	50

Within-breed Evaluation

Dairy Significance	EBV	99 th	75 th	50 th	25 th	1 st	%rank
Calving Ease	6.1	Hard				Easy	25
Gestation Length	-8.9	Long				Short	5
Birth Weight	2.3	Heavy				Light	20
Beef Significance	EBV	99 th	75 th	50 th	25 th	1 st	%rank
400 Day Weight	113	Light				Heavy	5
Carcass Weight	77	Light				Heavy	20
Eye Muscle Area	7.5	Less				More	35
Intramuscular Fat	3.6	Less				More	20



BSI® 1078 **\$Dairy®** \$2,409



BSI® 1011 **\$Dairy®** \$2,339



Speckle Park

- LIC is supplied Speckle Park genetics by Maungahina Stud in Masterton
- All Speckle Park beef pack bulls are homozygous polled and white-coated for maximum colour marking of progeny
- All bulls in the Speckle Park pack are homozygous black for their speckling (no red gene carriers)

Maungahina Stud is home to one of New Zealand’s foremost Speckle Park herds. With over a century of beef stud cattle breeding in their family, the McKenzie’s apply intense selection pressure on the performance and structure of their cattle to produce high-performing genetics. The breed, which originated in Canada, is new relative to traditional beef breeds, and its genetic base is a mixture of British White Park, Shorthorn and Angus. Speckle Park are polled, early maturing and produce incredible yielding carcasses with impressive weight gains targeting 18-month markets.

Product options:

- No-choice white Speckle Park beef pack - \$19.45 + GST
- Your choice of Speckle Park bull - \$21.20 + GST (page 17)

No-choice white Speckle Park beef pack

(homozygous polled)

\$19.45 (+GST)

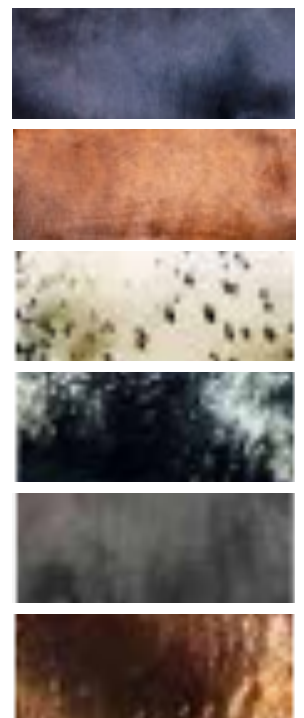
Within-breed ranking (can only be compared to other Speckle Park)

Gestation Length	Birth Weight	400 Day Weight	Carcase Weight	Eye Muscle Area	Intramuscular Fat
Top 15%	Top 40%	Top 25%	Top 25%	Top 70%	Top 20%



Speckle Park cross dairy calves. Photo courtesy of Brad Morton.

Coat Colour Possibilities:



721405 Maungahina Quantity

Breeder: Maungahina Stud

Individually

\$21.20_{+gst}



Proven Progeny Averages

Gestation Length

281.0 days



Within-breed Evaluation

Dairy Significance	EBV	99 th	75 th	50 th	25 th	1 st	%rank
Gestation Length	-0.7	Long	[Progress bar]			Short	15
Birth Weight	2.1	Heavy	[Progress bar]			Light	65
Beef Significance	EBV	99 th	75 th	50 th	25 th	1 st	%rank
400 Day Weight	34	Light	[Progress bar]			Heavy	15
Carcase Weight	28	Light	[Progress bar]			Heavy	10
Eye Muscle Area	0.6	Less	[Progress bar]			More	50
Intramuscular Fat	0	Less	[Progress bar]			More	60

722084 Maungahina Rebel

Breeder: Maungahina Stud

Individually

\$21.20_{+gst}



Proven Progeny Averages

Gestation Length

Due Nov 2024



Within-breed Evaluation

Dairy Significance	EBV	99 th	75 th	50 th	25 th	1 st	%rank
Gestation Length	-1.3	Long	[Progress bar]			Short	10
Birth Weight	1.3	Heavy	[Progress bar]			Light	35
Beef Significance	EBV	99 th	75 th	50 th	25 th	1 st	%rank
400 Day Weight	33	Light	[Progress bar]			Heavy	15
Carcase Weight	25	Light	[Progress bar]			Heavy	20
Eye Muscle Area	1.1	Less	[Progress bar]			More	20
Intramuscular Fat	0.5	Less	[Progress bar]			More	15

719022 Maungahina Northern Star

Breeder: Maungahina Stud

Individually

\$21.20_{+gst}



Proven Progeny Averages

Gestation Length

285.6 days



Within-breed Evaluation

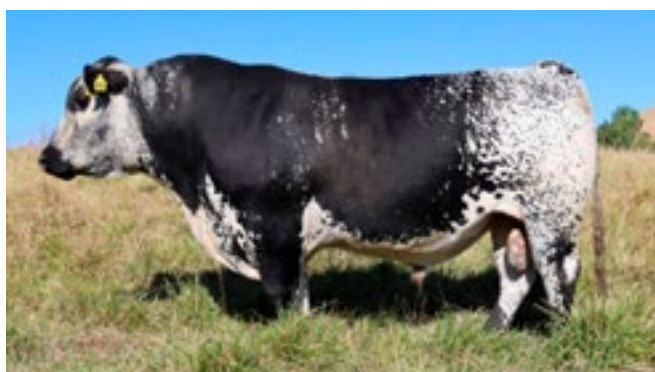
Dairy Significance	EBV	99 th	75 th	50 th	25 th	1 st	%rank
Gestation Length	1.6	Long	[Progress bar]			Short	99
Birth Weight	2.8	Heavy	[Progress bar]			Light	85
Beef Significance	EBV	99 th	75 th	50 th	25 th	1 st	%rank
400 Day Weight	24	Light	[Progress bar]			Heavy	50
Carcase Weight	19	Light	[Progress bar]			Heavy	45
Eye Muscle Area	-0.1	Less	[Progress bar]			More	90
Intramuscular Fat	1.9	Less	[Progress bar]			More	1

720060 Premier Platinum

Breeder: Maungahina Stud

Individually

\$21.20_{+gst}



Proven Progeny Averages

Gestation Length

282.8 days



Within-breed Evaluation

Dairy Significance	EBV	99 th	75 th	50 th	25 th	1 st	%rank
Gestation Length	-0.7	Long	[Progress bar]			Short	15
Birth Weight	2.2	Heavy	[Progress bar]			Light	70
Beef Significance	EBV	99 th	75 th	50 th	25 th	1 st	%rank
400 Day Weight	52	Light	[Progress bar]			Heavy	1
Carcase Weight	46	Light	[Progress bar]			Heavy	1
Eye Muscle Area	0.9	Less	[Progress bar]			More	30
Intramuscular Fat	0.4	Less	[Progress bar]			More	20



Profit Maker®

- Supplied by Rissington Cattle Company
- Polled (homozygous)
- Solid-coloured black
- Improved growth rates compared to purebred Angus

Both LIC and Rissington Cattle Company embrace crossbreeding and the value of hybrid vigour. Profit Maker® is a composite of Angus, Red Angus, Simmental, Gelbvieh and South Devon. This composite combines the fleshing ability, marbling and moderate size of the British breeds with the muscle, milk, and growth of the European breeds.

Rissington Profit Maker® bulls are selected through the Leachman multi-breed evaluation.

Product options:

- No-choice Profit Maker® beef pack - \$11.85 + GST
- Your choice of Profit Maker® bull - \$18.20 + GST (page 19)

No-choice Profit Maker® beef pack

(black, homozygous polled)



\$11.85 (+GST)

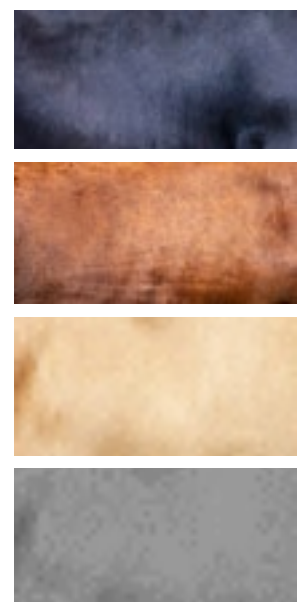
Multi-breed average ranking (can only be compared to bulls on page 25)

BSI	Gestation Length	Birth Weight	Yearling Weight	Carcase Weight	Eye Muscle Area	Intramuscular Fat
1003	Top 15%	Top 20%	Top 5%	Top 10%	Top 10%	Top 1%



No-choice Profit Maker® beef pack yearling bull

Coat Colour Possibilities:





721266 Rissington Expedite

Breeder: Rissington Cattle Company

Individually \$18.20_{+gst}

Commentary:

Expedite is one of the Profit Maker® bulls who was retained for the stud duties of Rissington Cattle Company, a testament to his figures. He is most definitely a dairy-suitable, carcass quality specialist with superb feed efficiency.



722320 Rissington Reliant

Breeder: Rissington Cattle Company

Individually \$18.20_{+gst}

Commentary:

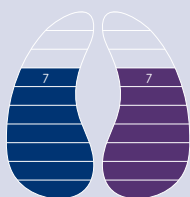
Reliant is a standout bull in the Rissington Profit Maker® herd. He is in the top 1% of the breed for gestation length and better than breed average for birth weight. His growth figures are where he excels, ranking in the top 5% for yearling weight and top 1% for carcass weight. Like Expedite, he has superb feed efficiency.



Proven Progeny Averages

Gestation Length

Due Nov 2023



BEEFPRINT®

- Methane Efficiency
- Nitrogen Efficiency

Proven Progeny Averages

Gestation Length

Due Nov 2023



BEEFPRINT®

- Methane Efficiency
- Nitrogen Efficiency

Multi-breed Evaluation

Dairy Significance	EBV	99 th	75 th	50 th	25 th	1 st	%rank	
Gestation Length	-4.1	Heavy	[Bar chart]				Light	1
Birth Weight	-3.9	Heavy	[Bar chart]				Light	1
Beef Significance	EBV	99 th	75 th	50 th	25 th	1 st	%rank	
Yearling Weight	99	Light	[Bar chart]				Heavy	10
Carcass Weight	64	Light	[Bar chart]				Heavy	1
Eye Muscle Area	0.9	Less	[Bar chart]				More	35
Intramuscular Fat	1.2	Less	[Bar chart]				More	1
Feed to Gain	-0.3	Less	[Bar chart]				More	1

BSI®

1095

\$Dairy®

\$2,282

Multi-breed Evaluation

Dairy Significance	EBV	99 th	75 th	50 th	25 th	1 st	%rank	
Gestation Length	-2	Heavy	[Bar chart]				Light	1
Birth Weight	1.1	Heavy	[Bar chart]				Light	40
Beef Significance	EBV	99 th	75 th	50 th	25 th	1 st	%rank	
Yearling Weight	103	Light	[Bar chart]				Heavy	5
Carcass Weight	58	Light	[Bar chart]				Heavy	1
Eye Muscle Area	1.1	Less	[Bar chart]				More	10
Intramuscular Fat	0.9	Less	[Bar chart]				More	1
Feed to Gain	-0.2	Less	[Bar chart]				More	2

BSI®

986

\$Dairy®

\$2,263



Slick Profit Maker®



720167 Rissington Savannah

Breeder: Rissington Cattle Company
 Commentary:

Individually \$18.20_{+gst}

Rissington Savannah is homozygous polled and homozygous for the slick gene. The slick gene provides heat tolerance to cattle and is common in tropical beef breeds. Savannah is 37.5% Senepol, 37.5% Simmental and 25% Angus. All of Savannah's progeny will be polled and more heat tolerant than their non-slick peers.



Proven Progeny Averages

Gestation Length

Due Nov 2023



Multi-breed Evaluation

Dairy Significance	EBV		99 th	75 th	50 th	25 th	1 st	%rank	
Gestation Length	-0.3	Heavy	[Bar chart showing heavy to light]					Light	45
Birth Weight	-0.2	Heavy	[Bar chart showing heavy to light]					Light	20
Beef Significance	EBV		99 th	75 th	50 th	25 th	1 st	%rank	
Yearling Weight	75	Light	[Bar chart showing light to heavy]					Heavy	35
Carcase Weight	49	Light	[Bar chart showing light to heavy]					Heavy	20
Eye Muscle Area	1.1	Less	[Bar chart showing less to more]					More	10
Intramuscular Fat	0.1	Less	[Bar chart showing less to more]					More	80
Feed to Gain	0.45	Less	[Bar chart showing less to more]					More	99

BEEFPRINT®

- Methane Efficiency
- Nitrogen Efficiency

BSI®

990

\$Dairy®

\$2,092

Simmental



Simmental

- LIC's Simmental are supplied by Rissington Cattle Company who are specialists in producing easier-calving, high-growth, quality-carcase specialists
- LIC's beef pack sires are all red with white faces, however variable markings should be expected from Simmental sires

No-choice Simmental beef pack

(Contains heterozygous and homozygous polled bulls)



\$11.85 (+GST)

Within-breed pack average ranking (can only be compared to other Simmental)

Calving Ease	Gestation Length	Birth Weight	400 Day Weight	Carcase Weight	Eye Muscle Area	Intramuscular Fat
Top 10%	Top 20%	Top 25%	Top 10%	Top 10%	Top 10%	Top 25%



722340 Kerrah Humdinger

Breeder: Kerrah Stud

Individually

\$16.20
+gst



100%
Polled



Red
Carrier



Not a
Dilution
Carrier



721344 Rissington Regent

Breeder: Rissington Cattle Company

Individually

\$16.20
+gst



100%
Polled



Red
Carrier



Not a
Dilution
Carrier

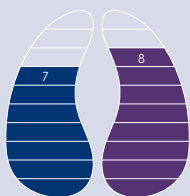


Within-breed Evaluation

Dairy Significance	EBV	99 th	75 th	50 th	25 th	1 st	%rank
Calving Ease	6.7	Hard				Easy	25
Gestation Length	-2.9	Long				Short	25
Birth Weight	0.1	Heavy				Light	35
Beef Significance	EBV	99 th	75 th	50 th	25 th	1 st	%rank
400 Day Weight	52	Light				Heavy	15
Carcase Weight	37	Light				Heavy	15
Eye Muscle Area	3.9	Less				More	10
Intramuscular Fat	0.1	Less				More	50

Within-breed Evaluation

Dairy Significance	EBV	99 th	75 th	50 th	25 th	1 st	%rank
Calving Ease	11.1	Hard				Easy	5
Gestation Length	-3.2	Long				Short	20
Birth Weight	-0.7	Heavy				Light	25
Beef Significance	EBV	99 th	75 th	50 th	25 th	1 st	%rank
400 Day Weight	61	Light				Heavy	5
Carcase Weight	40	Light				Heavy	10
Eye Muscle Area	4.2	Less				More	5
Intramuscular Fat	0.7	Less				More	15



BEEFPRINT®

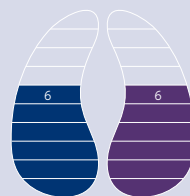
- Methane Efficiency
- Nitrogen Efficiency

BSI®

785

\$Dairy®

\$2,128



BEEFPRINT®

- Methane Efficiency
- Nitrogen Efficiency

BSI®

902

\$Dairy®

\$2,336



March Data



February Data

Sexed Beef

LIC is offering a number of breeds for male-sorted frozen sexed beef semen in 2023:

SGL Hereford \$36.95 + GST

SGL Angus \$38.50 + GST

Polled Charolais \$36.50 + GST

Polled Speckle Park \$42.15 + GST

Polled Profit Maker[®] \$36.50 + GST

Polled Simmental \$36.50 + GST



Quantities are limited so contact your Agri Manager to place your order as soon as possible. Frozen sexed beef semen is a no-choice product.

Sexing Technologies are contracted to sex-sort LIC's top dairy and beef sires, and their state-of-the-art equipment optimises the straining of cells, removes dead sperm cells during the process, and utilises specialty media to ensure the best possible chances of conception.

LIC frozen sexed semen straws contain 4 million sperm cells per straw and achieve an average of 90% gender accuracy

The use of female sex-sorted dairy semen across your top animals, and selective use of beef semen over cows that shouldn't be creating replacement heifers can accelerate rates of genetic gain and progress toward any goal. Along with that, the use of beef semen presents an opportunity to reduce the number of lesser-value surplus calves leaving the farm.



Young SGL Hereford sires at Shrimpton's Hill Herefords

Note: Users of frozen sexed semen are required to sign a disclaimer to acknowledge they may experience lower NRR results than expected.

Single AI Use Provision: The customer agrees that each straw of sorted semen purchased or otherwise acquired by LIC shall only be used by the customer for the single use artificial insemination of one female bovine with the intent to produce a single offspring, and not for in vitro fertilization or embryo transfer unless specifically approved on an individual customer basis by Inguran d/b/a Sexing Technologies (Navasota, Texas, USA) in writing.

Additional Beef Bulls

AB Code	Breed	Name	Polled Status	Sire	Dam	Price (+GST)
716005	Dexter	Jimaris Oakley Cruise	Unknown	Whare Ra Cruise	Summer Wine Elleen	\$21.00
721084	Galloway (Belted)	Ranch Galloways Yogi 906	Unknown	Lilliesleaf Archie 1404	Ranch Galloways Yasmin	\$36.00
719117	Galloway	Tekooa Lewis (White)	Homozygous polled	Tekooa Banner	Moonshine Lucky	\$36.00
721142	Galloway	Tawhai Pedro (White)	Unknown	Tawhai Lockie	Tawhai Princess	\$36.00
717007	Gelbvieh	Tawera Rau U822 (AI)	Unknown	Double U Freedom Fog 201M	Tawera Mere PM213	\$17.00
716016	Hereford	Craigmore Opium 10214 Polled	Homozygous polled	Ardo Wairoa 5218	Craigmore Lydia 04074	\$21.00
710081	Hereford	Koanui Boulder 9217	Homozygous polled	Koanui Boulder 7050	Koanui Irane 6110	\$14.00
715001	Hereford	NZHA Oberlin 13 40	Homozygous polled	Matapouri Koa 09 99	Matapouri Fay 09 101	\$14.00
504574	MRI	Glenmark Laurie	Unknown	Crosslea Julius	Crosslea Hazel	\$13.00
504575	MRI	Redford Manus 41	Unknown	Jasiri Ivan	Crosslea Ina	\$13.00
716051	Profit Maker®	Rissington Bullseye 135159	Heterozygous polled	Leachman Forcefull L155W	Rissington 030106	\$17.00
703097	Red Angus	Rissington Lion King (01886)	Homozygous polled	Rissington Red AF498	Rissington Red Sarah 118	\$13.00
715049	Red Devon	Red Rocket 08/49	Unknown	-	-	\$19.00
717040	Red Devon	Waiuku Fire 48/16	Unknown	Tinopai TO 1359	Tinopai IQ Helen 1256	\$17.00
703046	Red Poll	Willowlea Super Sire	Homozygous polled	Oakwood Super Sire	Willow Lea Christina R15	\$9.00
716004	Santa Gertrudis	Blue Stone CJ174	Unknown	Gyranda Crackerjack V532	Bluestone Anne A506	\$11.00
714033	Scottish Highland	Harry PBW4 (Black)	Horned	-	-	\$26.00
715139	Scottish Highland	Balmoral of Berwick GYW3 (Red)	Horned	Campbell Og of Killara	Isabella of Berwick	\$26.00
719034	Scottish Highland	Ice of Strathburn (Cream)	Horned	Braco Saxon	Isla 7th of Trelissick	\$26.00
711016	Simmental (Red)	Rissington New Standard AN158 (solid)	Homozygous polled	Puketawa New Level	Rissington AN398	\$17.00
719024	Simmental (Black)	Rissington Beacon	Heterozygous polled	Hooks Beacon 56B	Rissington AB5061	\$15.00
716061	Speckle Park	Maungahina Kidmans Cove (Leopard)	Heterozygous polled	SPKNZ Falcon	Mainstream E12	\$19.00
720062	Speckle Park	Maungahina Norgate N268 (White)	Heterozygous polled	Maungahina Kidmans Cove	Maungahina H61	\$19.00
720159	Speckle Park	Maungahina Promise (White)	Homozygous polled	Maungahina Lawrin	Maungahina J13	\$19.00
722081	Speckle Park	Maungahina Rambo (Leopard)	Homozygous polled	Maungahina Maximus	Maungahina L253	\$19.00
719070	Stabilizer®	Focus Beef Maker (Red)	Homozygous polled	Focus Stabilizer 121303	Focus Trinity 135263	\$17.00
719035	Wagyu	Will 16-1006	Horned	Longford FE02H	Dam 29 NZ Purebred	\$15.00

Additional Beef Pack options

Beef bulls are selected predominantly for calving ease and gestation length within breed.

You may purchase pack semen from any of the following breeds (you have no choice of bulls within each breed):

Australian Lowline
Beef Shorthorn

Blonde D'Aquitaine
Limousin

Murray Grey
Piedmontese

Romagnola
Salers

Order in quantities of x5 straws per pack

*InvestaMate discounts may apply if all discount criteria are met

Per straw \$11.85*
+gst

Beef Tags

LIC is excited to offer NAIT-compliant dairy beef calf packs. No matter whether you intend to sell or rear your dairy beef calves, our selection of dairy beef tag sets will ensure ease of management and a recognised point of difference at sale time.



BeefPrint® Tag Set

- NAIT HDX Birth ID Tag set
- Double medium, only available in green

Exclusively available for farmers who utilised LIC BeefPrint-evaluated beef sires. BeefPrint sires have feed intake and environmental footprint efficiency estimates per kg of meat product. When feed is the #1 cost of production and intake is correlated to emissions, make sure your dairy beef animals are recognised for their efficiencies with a BeefPrint tag set.

\$7.15

Angus X Dairy Tag Set

- NAIT HDX Birth ID Tag set
- Double medium, only available in green

Out of an exciting partnership with AngusPure NZ Ltd and Allflex, Angus X Dairy tag sets are now available through LIC. Angus X tag sets are available for calves by on-the-hoof or AB registered/performance recorded Angus cattle, of which every Angus bull supplied by LIC is. Get recognition for quality and give buyers certainty in the parentage of your premium beef stock with Angus X Dairy tag sets.

\$7.15

Angus X BeefPrint® Tag Set

- NAIT HDX Birth ID Tag set
- Double medium, only available in green

Exclusively available for farmers who used LIC BeefPrint-evaluated Angus sires. All of LIC's 2023 catalogued Angus sires have feed intake and environmental footprint efficiency estimates. In partnership with AngusPure NZ Ltd, these tags are recognition for quality and give buyers certainty in the parentage of your premium beef stock with Angus X Dairy tag sets.

\$7.15

For more information or to check whether your beef sires are BeefPrint-evaluated contact your LIC representative.

Multi-breed Data for Individual Beef Sires

Sire Information					Estimated Progeny Differences							Index
AB Code	Name	Breed	Page	Price (\$)	Gestation Length (days)	Birth Weight (kg)	Yearling Weight (kg)	Carcass Weight (kg)	Eye Muscle Area (sq in)	Intramuscular Fat (%)	Feed to Gain (kg)	\$Dairy® (\$)
721261	Rissington Paradox	Angus	15	\$19.20	-1.6	0.2	57	23	0.7	1.9	-0.1	\$2,339
722250	Rissington Gold Rush	Angus	15	\$19.20	-2.6	-1.6	47	28	0.9	1.3	-0.1	\$2,409
721362	Paringa Foremost	Charolais	13	\$16.20	-1.0	2.0	55	32	1.6	0.0	0.0	\$2,227
722400	Kakahu Milestone	Charolais	13	\$16.20	-1.8	1.7	47	33	1.6	0.1	0.2	\$2,163
721266	Rissington Expedite	Profit Maker®	19	\$18.20	-4.1	-1.8	45	29	0.9	1.2	-0.1	\$2,282
722320	Rissington Reliant	Profit Maker®	19	\$18.20	-2.0	0.5	47	26	1.1	0.9	-0.1	\$2,263
720167	Rissington Savannah	Profit Maker®	20	\$18.20	-0.3	-0.1	34	22	1.1	0.1	0.2	\$2,092
721344	Rissington Regent	Simmental	21	\$16.20	-0.4	2.3	56	27	1.2	0.2	-0.1	\$2,336
722340	Kerrah Humdinger	Simmental	21	\$16.20	2.5	4.8	51	30	1.4	0.1	-0.1	\$2,128

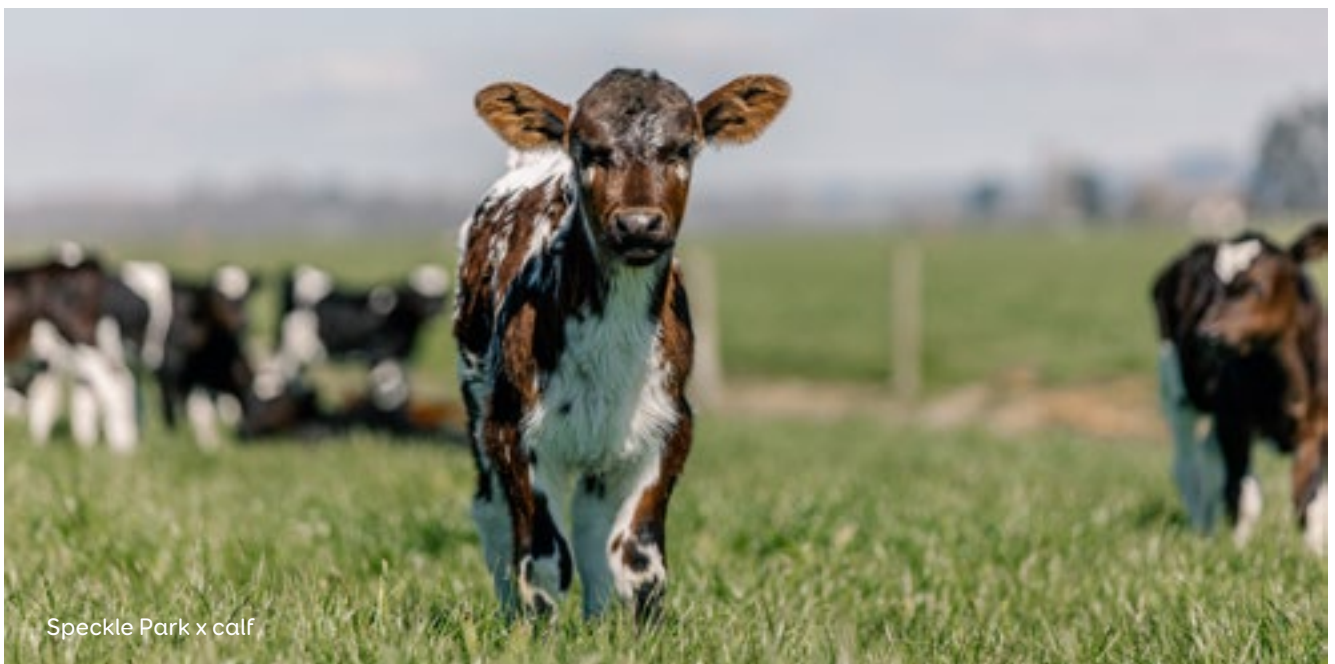
For farmers targeting a specific trait irrespective of breed, the multi-breed \$Dairy® analysis from Rissington Cattle Co. allows for direct comparison of sires.

LIC is fortunate to have quality relationships with Rissington Cattle Company and Kakahu Stud who are \$Dairy® partners.

Breeding restrictions for LIC beef products

All beef semen, whether supplied by LIC-owned beef bulls or purchased through third party beef breeders is covered by LIC's clause 62-63 in LIC Service Rules, which restricts any offspring from LIC supplied semen being collected for semen production.

The Service Rules can be found on LIC's website www.lic.co.nz

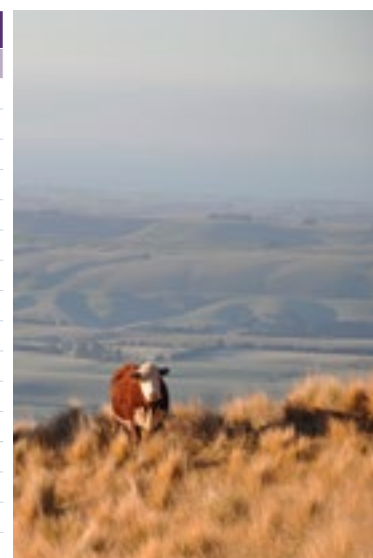


Speckle Park x calf

Breed Information

This page displays information that can be used as a guide when considering different breeds. The Gestation Lengths and Birth Weights displayed below are not those of the LIC beef product range. For information on the gestation lengths of a particular LIC beef product, consult the relevant page or ask your Agri Manager for assistance.

Beef Breed Averages			
	Breed	Average Gestation Length (Days)	Average Birth Weight (kg)
Beef	Angus	280	34
	Belgian Blue	283	47
	Blonde D'Aquitaine	288	36
	Charolais	285	41
	Hereford	284	38
	Limousin	289	39
	Murray Grey	283	34
	Profit Maker®	282	34
	Simmental	284	39
	Speckle Park	283	34
	Stabilizer®	282	35
	Wagyu	286	32
Dairy	Friesian	281	37
	Jersey	281	29
	Crossbred	281	33
	Ayrshire	281	35



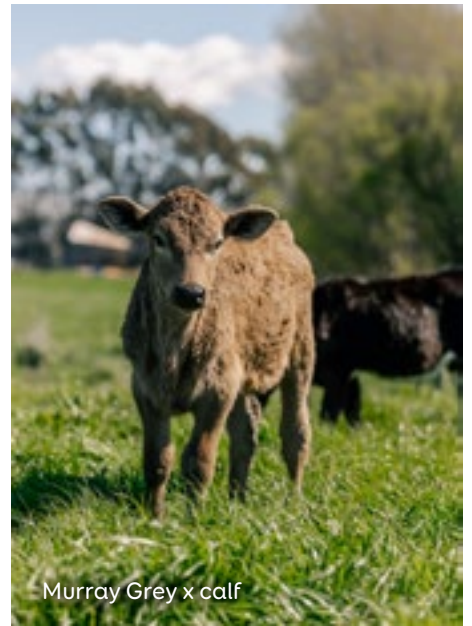
Note: There are a number of information sources contributing to this table and variation will occur. This table should be used as a guide only.



Mixed breed beef x dairy cattle in the Beef + Lamb NZ Dairy Beef Progeny Test



Hereford x calf



Murray Grey x calf



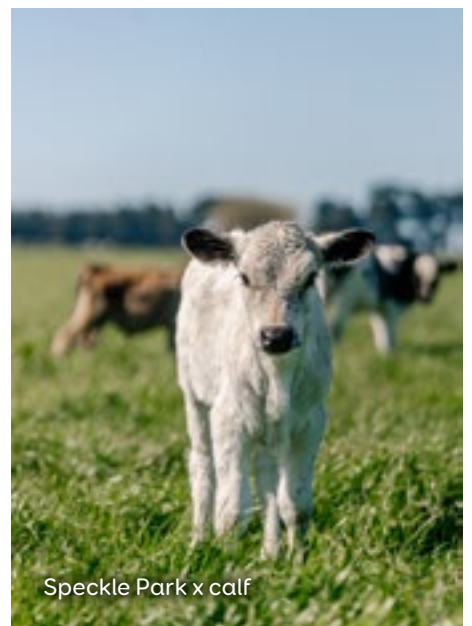
Angus x calf



Charolais x calves



Murray Grey x and Simmental x bulls



Speckle Park x calf

LIC
Private Bag 3016
Hamilton 3240
Phone 0800 651 156

© Copyright 2023 Livestock Improvement Corporation Limited.
All rights reserved.

The products in this catalogue are offered by LIC subject to the Conditions and Service Rules, a copy of which is available at www.lic.co.nz. The rules contain limitations and restrictions of liability by LIC that you should be aware of before placing orders for semen. Every effort has been made to ensure the accuracy of the information in this catalogue, but we accept no responsibility for any errors or omissions. LIC reserves the right to increase/decrease prices depending on availability and other conditions beyond our control. All prices quoted in this catalogue are exclusive of GST.

