

ALLFLEX APPLICATOR MAINTENANCE & TROUBLE SHOOTING GUIDE



Maintaining your Allflex Applicator:

How should I clean the Allflex Applicator?

- The applicator should be cleaned with a cloth to remove any dirt.
- **Do not** wash with left-over milking machine plant acid wash or with the high-pressure hose: This may cause the Applicator to rust.



What do I need to do to maintain my Allflex Applicator?

- After cleaning, protect the metal moving parts by coating with CRC or WD-40: This will help free up the parts and prevent rust.
- **Do not** use zinc-based spray paint on the moving parts; this- may affect part's clearance.



How should I store my Allflex Applicator?

- After cleaning and maintenance, store in an airtight bag to prevent rust.
- **Do not** store in damp conditions.



Trouble Shooting Guide:

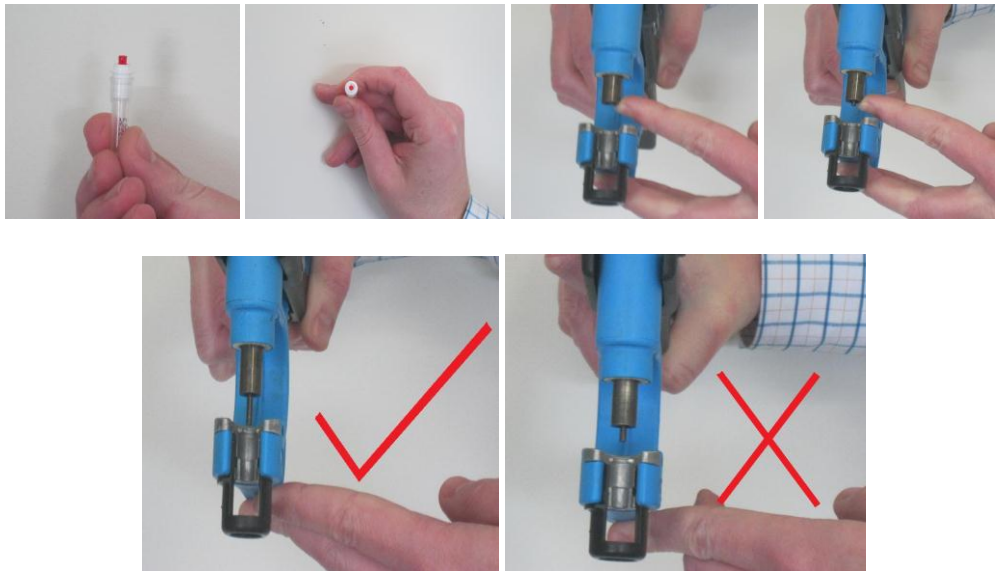
What should I do if the cutting piece gets stuck in the Allflex Applicator?

- Occasionally a part of the cutter may remain in the applicator. To remove, gently lever it out with a small flat-head screwdriver.
- **Do not** bang the applicator on a hard surface: This could break the equipment.



What should I do if the red sample plunger is protruding from the Allflex Tissue Punch?

- Check the Gun Pin is fully depressing; the red plunger can be secured into the punch by gently pushing it in with your fingernail.
- Using a new cutter piece each time will prevent this.



What should I do if the cutter and punch do not align?

- Check the punch ridge is in the correct groove.

