

# Heat Patch Application



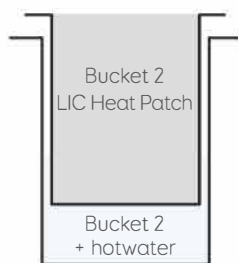
**Storage:** Always store Heat Patches upright (as arrows indicate) in a cool, dry environment.

**Preparation:** Remove all loose hair, dirt and dust 12-24 hours prior to application by combing or mechanically trimming. Trimming hair from the animal's tail can also aid in keeping the patches clean.

- Do not apply patches to wet animals. Either dry with a towel or postpone application until animals are dry.
- It is imperative that the supplied 'Tack Cloths' are used to wipe the area of the cow where the heat patch is to be applied just prior to application as this aids with the patch adhesion.

**Maintenance:** Ensure you check and maintain the Heat Patches stickability every 2-3 days. Heat Patches should be replaced every 30-35 days to ensure patches are clean and free of excessive dust and dirt.

## STEP 1 Warm between 37- 50 degrees, being careful not to overheat.



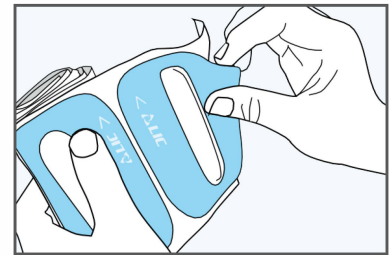
### Warming method:

- Take two identical empty buckets.
- Fill one bucket up 1/3 full with hot water.
- Place the second bucket inside the first, the Heat Patch packets can now be placed inside to warm.
- The hot water may need to be replaced as it may cool prior to completing the application of your entire herd.

At no point should the LIC Heat Patch units become wet or be submerged in water prior to application.

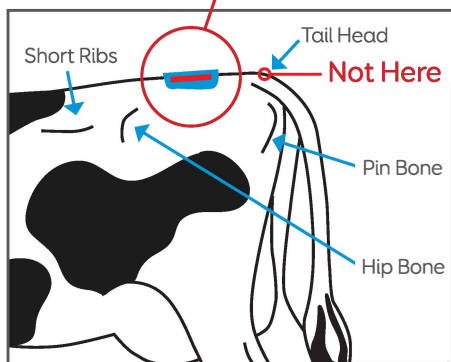
## STEP 2

Glue should be warm and tacky and patch should be easily peeled away from backing.



## STEP 3

### Apply Patch Here



### Placement

The larger the cow, the closer to the rump the Heat Patch is placed.

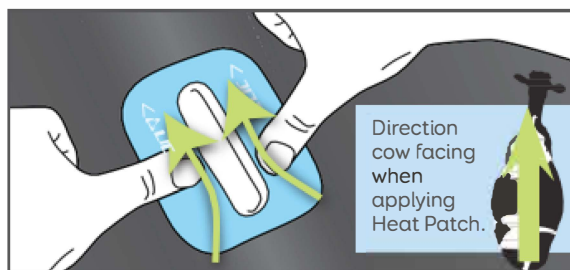
For an average sized 500kg cow, position the top of the Heat Patch in line with the back of the hip bones as per the illustration. On taller, broader cows the Heat Patch should be placed further toward the rear (3.5cm closer to the tail for every 50kg over the 500kg average).

Final placement should be based on common sense. Always position the Heat Patch so it will receive maximum pressure from the brisket of a mounting animal and be as visible as possible to the camera.

**DO NOT** place Heat Patches over tail-paint or pour-on treatments and drenches.

Do not place over dips on the cow's backbone.

## STEP 4



Apply to animal (ensure the arrows on the Heat Patch are facing forward) and push hard with both thumbs.

If it's **RED**, she's **READY**.

